

## NEW COMPETITOR INFORMATION

### PRIOR TO THE EVENT

Read the Supplementary Regulations, particularly Part 2 as they contain all the important information about the day.

### DOCUMENTATION TO BRING TO THE EVENT

- (1) Your Motorsport Australia Competitors licence (card or digital) and licence Passbook;
- (2) Photo ID;
- (3) Motorsport Australia Vehicle Log Book if you have one.

### UPON ARRIVAL AT THE EVENT

- (1) Park your car in its garage/carport and make a note of the garage/carport number;
- (2) Set your cold tyre pressures low to allow for an increase due to heat build-up;
- (3) Bring your helmet and documentation (as above) to scrutineering /check-in.

### AT SCRUTINEERING/CHECK-IN

- (1) Present your helmet for checking at the *Helmet* table;
- (2) Proceed to relevant Scrutineering/Check-in table—there are separate tables for those *with a Log Book* and those *without a log book*;
- (3) Present your Photo ID and Log Book if your car has one;
- (4) After checking, a driver's wrist band and a Scrutineering windscreen sticker will then be issued.
- (5) Return to your vehicle. Make sure that you have collected your *Timing Transponder* and are prepared to attend the *Drivers Briefing* on time.

### COMPETITION STICKERS

Vehicles are to display the following competition stickers as per Attachments 1 and 2:

(1) **Scrutineering Sticker**—to be placed at the top of the windscreen on the driver's side and depending on what type of scrutineering sticker you have been issued take the following action:

- a. **Yellow "Audit Required" sticker.** Take your vehicle and your apparel to the Scrutineering bay for a Self Extraction test\* and a Scrutineering inspection between 9:30am and 1:00pm. Cars with these yellow stickers will not be permitted on the track after 1:00pm.
- b. **Red "Audit Required" sticker.** Take your vehicle and your apparel to the Scrutineering bay for a Scrutineering inspection before competition commences. Cars with these red stickers will not be permitted on the track at all.
- c. **Green "Scrutineering Approved" sticker.** Cars with these stickers are free to compete.

- (2) **Type Sticker**—to be placed on the vehicle's rear window;
- (3) **EV Sticker** (Electric vehicles only) - to be placed alongside each side competition number;
- (4) **First Time Indicator**— competitors running for the first time on this circuit are to apply an “X” in insulating tape, 150mm in size in a contrasting colour to the body, positioned in a location on the back of their car, clearly visible from the rear.
- (5) **Club Series Competition Number Suffix** – If you are a *NSW Club Series competitor* and have been advised prior to the event that your competition number is the same as a *NSW State Championship competitor* you will be issued at no cost a set of “C” decals to add as a suffix to all the competition numbers on your vehicle, for example **123c**. Collect these decals from either the Logbook or Non Logbook tables at scrutineering check-in and apply them to your vehicle before competing. Don't risk getting black flagged if you don't do this.

### **DRIVERS BRIEFING**

Make sure that you have downloaded and read the Drivers Briefing Notes before the event. You must attend the **compulsory** Drivers Briefing and sign the attendance sheet. Non attendees risk being fined.

### **TIMING TRANSPONDERS**

Go to Timing in the Control Tower and collect your transponder. Make sure that it is correctly mounted. Don't forget to return it after you have finished for the day.

### **MARSHALLING**

When your Group is called, drive your car to the Marshalling Area (“dummy grid”) in full race gear with your helmet on, and stage in your Grid Position according to the Grid Number on your windscreen sticker.

### **IN COMPETITION**

You are not the only car on the track trying to run a quick time. Please drive considering other drivers as you would like them to consider you.

- Keep an eye on your mirrors. Maintain your racing line when being overtaken. It is the overtaking driver's responsibility to overtake safely.
- Do not “dive bomb” other cars under brakes into corners. Do not impede a faster car.
- If you come off the track, make sure you enter it again safely, without throwing dirt onto the track by spinning your wheels.
- If you have a fluid leak or mechanical problem, either pull off the circuit or drive back to the pits OFF the race line. The greatest delays in these events are caused by cleaning up spills made by competitors on the track.

### **AFTER A SESSION**

Return to your garage, do not apply your hand brake (hot pads can adhere to rotors), open your bonnet and immediately adjust your tyre pressures while hot. This will set up the correct tyre pressure for your next session.

## Attachment 1 - Scrutineering Windscreen Stickers

Group Number  
(Competition sessions  
will be called to the  
Dummy Grid in Group  
Number order. Keep  
listening to the track  
announcements)

Green  
"Scrutineering  
Approved"  
Sticker.  
Vehicles are  
permitted to  
compete.



Grid  
Position  
(Line up on  
Dummy  
Grid in this  
position)

Competition  
Number

"LB" denotes  
the car has a  
log book;  
"NLB" denotes  
that it does not  
have a log



Yellow "Audit Required" Sticker.  
Present vehicle to the Scrutineering  
Bay 9:30am to 1:00pm. Vehicles are  
not permitted to compete after  
1:00pm. Once scrutineered, a Green  
sticker will be issued permitting the  
vehicle to compete.



Club Series Suffix.

Only used when a State Championship  
vehicle has the same competition number.

Red "Audit Required" Sticker.  
Present vehicle to the  
Scrutineering Bay before  
9:30am. Once scrutineered, a  
Green sticker will be issued  
permitting the vehicle to  
compete.

## Attachment 2 - Vehicle Signage Requirements

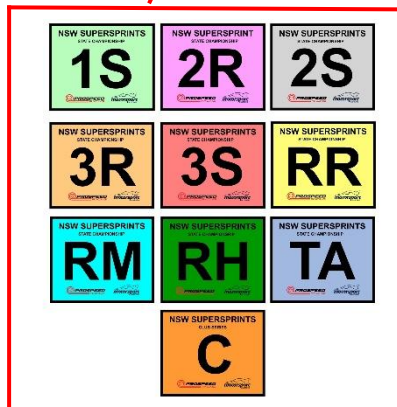
### 1. Side & Rear



First Time at this  
Circuit Indicator

Type Sticker

EV Sticker  
Electric  
Vehicles  
Only



Competition  
Number  
230mm high.  
*Readable  
from a  
distance and  
in contrasting  
colour to  
vehicle's  
body.*

### 2. Front



Scrutineering  
Sticker

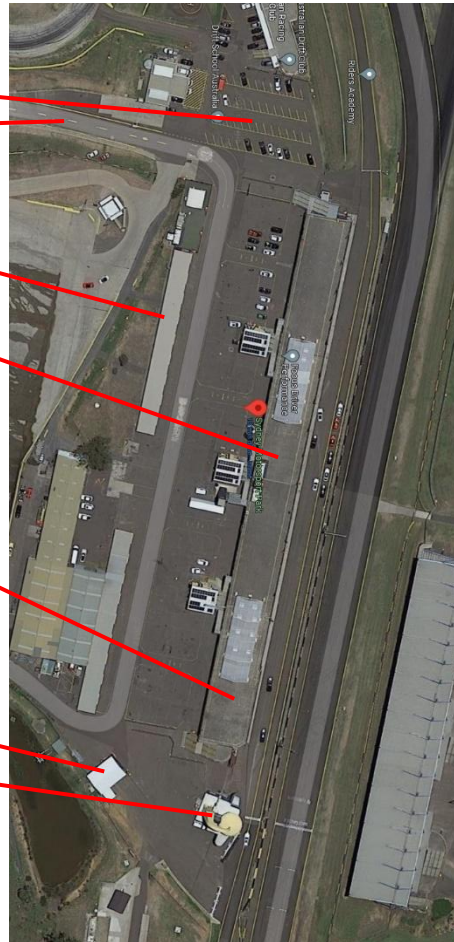
Towing  
Point  
(Triangle  
Sticker if  
not  
visible)

Timing  
Transponder

Fluoro  
Competition  
Number  
150mm high

### Attachment 3 - Sydney Motorsport Park Location Diagram

- Marshalling Area
- Entry Roadway
- Carports
- Garages
  
- Hinxman Room  
*(On top of pits for  
Scrutineering Check in and  
Drivers Briefing)*
- Scrutineering bay
- Control Tower  
*(Downstairs – Event Secretary,  
First floor – Timing for  
Transponder collection,  
Second floor – Race Control)*



Supersprinting is one of the safest forms of motorsport, especially in terms of potential damage to your car. Cars compete in Groups of cars that lap at similar speeds, and each group enters the circuit in fastest to slowest order.

This means that competitors should always have a car slightly faster than them in front that they can “chase”, which not only helps with driver development in learning the racing lines, but it also adds fun to the day.

The greatest risk is the one that you create in terms of not driving to the conditions, surroundings or your skill levels. You will get the most out of this sport if you treat every event as a learning opportunity, progressively increasing your pace as your experience and skill level improves,

If you have any questions, please contact the Supersprint Panel, preferably by email to [supersprintnsw@gmail.com](mailto:supersprintnsw@gmail.com).

#### **\* Self Extraction Test**

*Motorsport Australia require competitors to undertake a Self Extraction test at least once in each calendar year. The test is conducted by Scrutineering, and the driver must be able to self-extricate and be clear from their Automobile in 10 seconds or less with a maximum of 3 attempts to pass. The test result will be noted in the vehicles log book with the driver’s licence number recorded, or in the NSW Supersprints data base for vehicles without a log book.*